



Setting up Reason Remote to work with Rob Papen Rack Extensions

Reason and Reason Essentials uses a protocol called 'Remote' for communicating between control surfaces and midi keyboard controllers.

More information can be found here - http://www.propellerheads.se/products/reason/index.cfm?article=remote&fuseaction=get_article

Rack Extensions from third party developers don't have Remote Maps set up automatically but with a bit of simple text editing you can create your own custom maps. There is also a guide available from Propellerhead Software to show you how to make your own set ups with your favourite Midi keyboard/Control Surface.

http://www.propellerheads.se/substance/discovering-reason/index.cfm?fuseaction=get_article&article=part33

Getting Rob Papen Rack Extensions talking to Remote

We have included a custom Remote Maps for Predator-RE, RPDistort and SubBoomBass RE to help you get started and this will enable you to control most sections of our Rack Extensions with your favourite controller. You will of course be able to customise your own maps using the guides above to tailor our Rack Extensions for your own set ups.

To install our modified .remotemap you need to copy and paste it into the Remote folder.

Locating the Remote Folder

You can find the Remote map for your midi controller in these locations:

- OS X!
Macintosh HD/Library/Application Support/Propellerhead Software/Remote
- Windows Vista/Windows 7
C:/Program Data/Propellerhead Software/Remote
- Windows XP
C:/Documents and Settings/All Users/Application Data/Propellerhead Software/Remote

Also please note that the location may be hidden if using Windows. To locate hidden files you need to go into the Folder and Search Options of Windows Explorer and make sure that "Show hidden files, drives and folders" is selected, in case you haven't done so already.

Once you've located the correct location (in our case the 'Other' folder) copy and paste our Midi Keyboard w Controls.remotemap into it. You'll then be asked if you want to modify the existing file and choose yes.

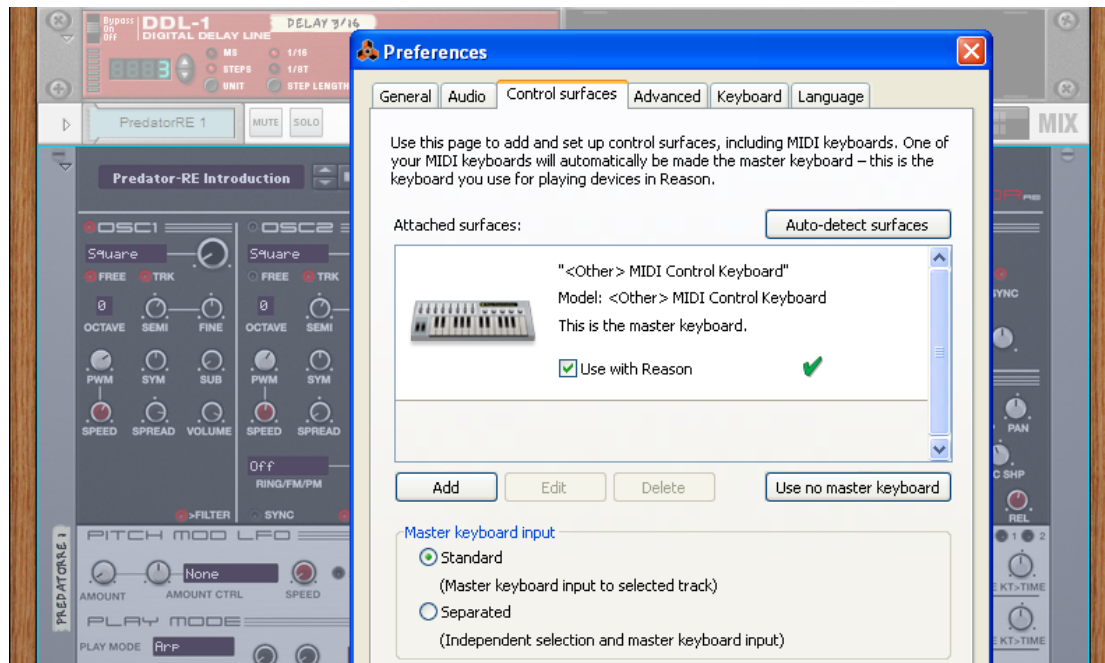
Note: If you're unsure make a backup of the old file first.

We have included an example of how to set up Predator-RE as a guide, however all current Rob Papen Rack Extensions are included in the supplied Remote Map.

Once you have done that open Reason/Essentials and you will need to set up your Midi controller.

Setting up your Midi Controller and Remote Map

To set up the new Remote map go into Reason Preferences from the edit menu and select Control Surfaces, select Add and then select "<Other> Midi Control Keyboard". You'll now have control of the top section of Predator-RE.



To find out which midi CC is being used you can put Reason/Essentials into Remote Override Edit mode and just hover over with the mouse. You'll then be presented with the controller and midi CC number.



Most of the Midi CC numbers in this remote map follow the Midi Chart included in the Predator-RE manual however you can only have up to 128 'Remotable' midi CC's from a choice of 255 parameters.

A full list of Midi CC's and Remotables is included in the Predator-RE manual.

Note: If you already have your own custom Remote maps then just copy the Predator-RE section into your existing map.

Here is the section for Predator-RE showing CC maps plus 'Remotables'

Scope //	Rob Papen Control Surface Item	com.Robpapien.PredatorRE Key Remotable Item	Scale	Mode
Map	CC 07	Volume		
Map	CC 10	Pan		
Map	CC 22	LFO 1 Amount		
Map	CC 23	LFO 2 Amount		
Map	CC 24	LFO 1 Speed in MS		
Map	CC 25	LFO 1 Speed in QB		
Map	CC 26	LFO 2 Speed in MS		
Map	CC 27	LFO 2 Speed in QB		
Map	CC 28	Osc 2 Sync		
Map	CC 29	Osc 2 Free Running		
Map	CC 30	Osc 2 Tracking		
Map	CC 31	Osc 3 Tracking		
Map	CC 32	Osc 2 Output		
Map	CC 33	Osc 3 Free Running		
Map	CC 34	Osc 3 Sync		
Map	CC 35	Osc 3 Octave		
Map	CC 36	Osc 3 Output		
Map	CC 37	Filter LFO Wave		
Map	CC 38	Filter LFO Sync		
Map	CC 39	Filter LFO Mod Source		
Map	CC 40	Filter LFO Mode		
Map	CC 41	Velocity Shape		
Map	CC 42	Attack Shape		
Map	CC 43	Decay/Release Shape		
Map	CC 45	Osc 1 Type		
Map	CC 46	Osc 1 Semi-tune		
Map	CC 47	Osc 1 Fine-tune		
Map	CC 48	Osc PWM 1 Amount		
Map	CC 49	Osc 1 PWM Speed		
Map	CC 50	Osc 1 Symmetry		
Map	CC 51	Osc 1 Sub-Volume		
Map	CC 52	Osc 1 Spread		
Map	CC 53	Osc 1 Volume		
Map	CC 54	Osc 2 Type		
Map	CC 55	Osc 2 Semi-tune		
Map	CC 56	Osc 2 Fine-tune		
Map	CC 57	Osc PWM 2 Amount		
Map	CC 58	Osc 2 PWM Speed		
Map	CC 59	Osc 2 Symmetry		
Map	CC 60	Osc 2 Sub-Volume		
Map	CC 61	Osc 2 Spread		
Map	CC 62	Osc 2 Volume		
Map	CC 63	Osc 2 Modulation Amount		
Map	CC 70	Osc 3 Type		
Map	CC 71	Osc 3 Semi-tune		
Map	CC 72	Osc 3 Fine-tune		
Map	CC 73	Osc PWM 3 Amount		
Map	CC 74	Osc 3 PWM Speed		
Map	CC 75	Osc 3 Symmetry		
Map	CC 76	Osc 3 Sub-Volume		
Map	CC 77	Osc 3 Spread		
Map	CC 78	Osc 3 Volume		
Map	CC 79	Osc 3 Modulation Amount		
Map	CC 80	Filter Type		
Map	CC 81	Filter Frequency		
Map	CC 82	Filter Q		
Map	CC 83	Envelope > Filter		
Map	CC 91	Velocity > Filter		
Map	CC 92	Keytrack > Filter		
Map	CC 93	LFO > Filter		
Map	CC 94	Filter Envelope Attack		
Map	CC 95	Filter Envelope Decay		
Map	CC 96	Filter LFO Mod Amount		
Map	CC 97	Osc 1 Octave		
Map	CC 98	Osc 1 Tracking		
Map	CC 99	Osc 1 Output		
Map	CC 100	Osc 1 Free Running		
Map	CC 101	Osc 2 Octave		
Map	CC 102	Filter Envelope Sustain		
Map	CC 103	Filter Envelope Fade		
Map	CC 104	Filter Envelope Release		
Map	CC 105	Filter LFO Speed in MS		
Map	CC 106	Filter LFO Speed in QB		

Map	CC 107	Filter 2 Type
Map	CC 108	Filter 2 Freq
Map	CC 109	Filter 2 Q
Map	CC 110	Filter 2 Pan
Map	CC 111	Velocity > Volume
Map	CC 112	Amp Attack
Map	CC 113	Amp Decay
Map	CC 114	Amp Sustain
Map	CC 115	Amp Fade
Map	CC 116	Amp Release
Map	CC 117	Envelope 1 Amount
Map	CC 118	Envelope 2 Amount
Map	CC 119	Osc 1
Map	CC 120	Osc 2
Map	CC 121	Osc 3
Map	CC 122	Osc 2 Mode
Map	CC 123	Osc 3 Mode
Map	CC 124	Mod Wheel > Filter
Map	CC 125	Filter Distort
Map	CC 126	Filter Vowel
Map	CC 127	Filter Smoothing

Please see the full Predator-RE manual for a complete list of Midi CC's and Remotable parameters.

Here is the section for RPDistort showing CC maps plus 'Remotables'

Please note that as this is an effect you need to assign RPDistort to a sequencer track(right click and 'Create Track') or Lock your midi controller to RPDistort for Remote to work.

Scope	Rob Papen	com.robapen.RPDistort				
//	Control Surface	Item	Key	Remotable Item	Scale	Mode
Map	CC 07	Volume				
Map	CC 08	Mix				
Map	CC 12	EQ On				
Map	CC 13	EQ Low				
Map	CC 14	Distortion Pre-Boost				
Map	CC 15	Distortion Normalize				
Map	CC 16	EQ Mid 1				
Map	CC 17	EQ Mid 2				
Map	CC 18	EQ High				
Map	CC 19	Noise Gate On				
Map	CC 20	Noise Gate Hold				
Map	CC 21	Noise Gate Attack				
Map	CC 22	Amp Distort				
Map	CC 23	Cab Distort				
Map	CC 24	Clipper Lower				
Map	CC 25	Clipper Upper				
Map	CC 26	Clipper Amount				
Map	CC 27	Cos Frequency				
Map	CC 28	Cos Amount				
Map	CC 29	Cross1 Cross				
Map	CC 30	Cross1 Amount				
Map	CC 31	Cross2 Lower				
Map	CC 32	Noise Gate Threshold				
Map	CC 33	Noise Gate Release				
Map	CC 34	Filter On				
Map	CC 35	Filter Type				
Map	CC 36	Distortion Normalize				
Map	CC 37	Compressor On				
Map	CC 38	Compressor Limit				
Map	CC 39	Compressor Ratio				
Map	CC 40	Compressor Attack				
Map	CC 41	Compressor Decay				
Map	CC 42	Compressor Volume				
Map	CC 43	Widen On				
Map	CC 44	Cross2 Upper				
Map	CC 45	Cross2 Amount				
Map	CC 46	Foldover Frequency				
Map	CC 47	Foldover Amount				
Map	CC 48	Fuzz Frequency				
Map	CC 49	Fuzz Amount				
Map	CC 50	Gapper Frequency				

Map	CC 51	Gapper Amount
Map	CC 52	Hard-limiter Limit
Map	CC 53	Hard-limiter Amount
Map	CC 54	Low-FI Bits
Map	CC 55	Low-FI S&H
Map	CC 56	Low-FI Noise
Map	CC 57	Low-FI Mix
Map	CC 58	Octave1 Lower
Map	CC 59	Octave1 Upper
Map	CC 60	Octave2 Frequency
Map	CC 61	Octave2 Amount
Map	CC 62	Overdrive Drive
Map	CC 63	Overdrive Amount
Map	CC 70	Power Drive
Map	CC 71	Power Amount
Map	CC 72	Rectification Rectify
Map	CC 73	Rectification Amount
Map	CC 74	Ring Mod Frequency
Map	CC 75	Ring Mod Amount
Map	CC 76	Saturation Drive
Map	CC 77	Saturation Amount
Map	CC 78	Softlimiter Amount
Map	CC 79	Square Lower
Map	CC 80	Square Upper
Map	CC 81	Square Amount
Map	CC 82	Transient Range
Map	CC 83	Transient Amount
Map	CC 91	Tube Limiter
Map	CC 92	Tube Rectifier
Map	CC 93	Tube Saturation
Map	CC 94	Tube Tone
Map	CC 95	Tube Emphasis
Map	CC 96	Mod 1 Amount
Map	CC 97	Mod 2 Amount
Map	CC 98	Mod 3 Amount
Map	CC 99	Mod 4 Amount
Map	CC 100	Ring Mod Wave
Map	CC 102	Filter Low
Map	CC 103	Filter Low Q
Map	CC 104	Filter High
Map	CC 105	Filter High Q
Map	CC 106	Widen Amount
Map	CC 107	Widen Speed
Map	CC 108	Widen Width
Map	CC 109	LFO 1 Amount
Map	CC 110	LFO 1 Speed(ms)
Map	CC 111	LFO 1 Speed(qb)
Map	CC 112	LFO 2 Amount
Map	CC 113	LFO 2 Speed(ms)
Map	CC 114	LFO 2 Speed(qb)
Map	CC 115	LFO 3 Amount
Map	CC 116	LFO 3 Speed(ms)
Map	CC 117	LFO 3 Speed(qb)
Map	CC 118	LFO 4 Amount
Map	CC 119	LFO 4 Speed(ms)
Map	CC 120	LFO 4 Speed(qb)
Map	CC 121	Bypass
Map	CC 122	Path
Map	CC 123	Global Mod
Map	CC 124	Mod Bypass
Map	CC 125	DC On
Map	CC 126	Distortion On
Map	CC 127	Distortion Type

Please see the full Distort-RE manual for a complete list of Midi CC's and Remotable parameters.

Here is the Remote Map for SubBoomBass-RE

Scope Rob Papen com.robpapen.SubBoomBassRE

//	Control Surface Item	Key	Remotable Item	Scale	Mode
Map	CC 07	Main Volume			
Map	CC 10	Panning			
Map	CC 22	Osc 1 Type			
Map	CC 23	Osc 1 On			
Map	CC 24	Osc 1 Output			
Map	CC 25	Osc 1 Volume			
Map	CC 26	Osc 1 Symmetry			
Map	CC 27	Osc 1 Sub-Osc Volume (Sine / Square)			
Map	CC 28	Osc 1 Octave			
Map	CC 29	Osc 1 Semi			
Map	CC 30	Osc 1 Fine			
Map	CC 31	Osc 1 PWM Amount			
Map	CC 44	Osc 1 PWM Speed			
Map	CC 45	Osc 2 Type			
Map	CC 46	Osc 2 On			
Map	CC 47	Osc 2 Volume			
Map	CC 48	Osc 2 Symmetry			
Map	CC 49	Osc 2 Sub-Osc Volume (Sine / Square)			
Map	CC 50	Osc 2 Octave			
Map	CC 51	Osc 2 Semi			
Map	CC 52	Osc 2 Fine			
Map	CC 53	Osc 2 PWM Amount			
Map	CC 54	Osc 2 PWM Speed			
Map	CC 55	Osc 2 FM Amount			
Map	CC 56	Filter 1 Type			
Map	CC 57	Filter 2 Type			
Map	CC 58	Filter 1 Frequency			
Map	CC 59	Filter 1 Resonance			
Map	CC 60	Filter 1 Vowel			
Map	CC 61	Filter 1 Distortion			
Map	CC 62	Filter 1 Key Tracking			
Map	CC 63	Velocity > Filter Frequency			
Map	CC 70	Mod Wheel > Filter 1 Frequency			
Map	CC 71	Filter 1 LFO Amount			
Map	CC 72	Filter 1 Envelope Amount			
Map	CC 73	Filter 1 Envelope Attack			
Map	CC 74	Filter 1 Envelope Decay			
Map	CC 75	Filter 1 Envelope Sustain			
Map	CC 76	Filter 1 Envelope Fade			
Map	CC 77	Filter 1 Envelope Release			
Map	CC 78	Filter 1 LFO Speed (ms)			
Map	CC 79	Filter 1 LFO Speed (qb)			
Map	CC 80	Filter 1 LFO Amount Control			
Map	CC 81	Filter 2 Frequency			
Map	CC 82	Filter 2 Resonance			
Map	CC 83	Unison Mode			
Map	CC 90	Port Speed			
Map	CC 91	Port Mode			
Map	CC 92	Volume Envelope Attack			
Map	CC 93	Volume Envelope Decay			
Map	CC 94	Volume Envelope Sustain			
Map	CC 95	Volume Envelope Fade			
Map	CC 102	Volume Envelope Release			
Map	CC 103	Velocity > Volume			
Map	CC 104	Pitch LFO Speed (ms)			
Map	CC 105	Pitch LFO Speed (qb)			
Map	CC 106	Pitch LFO Amount			
Map	CC 107	Free Envelope Attack			
Map	CC 108	Free Envelope Decay			
Map	CC 109	Free Envelope Sustain			
Map	CC 110	Free Envelope Release			
Map	CC 111	Free Envelope Fade			
Map	CC 112	Free Envelope Amount			
Map	CC 113	Free LFO Speed (ms)			
Map	CC 114	Free LFO Speed (qb)			
Map	CC 115	Free LFO Amount			
Map	CC 116	FX 1 On			
Map	CC 117	FX 1 Pan			
Map	CC 118	FX 2 On			
Map	CC 119	FX 2 Pan			
Map	CC 120	Unison Amount			
Map	CC 121	Decay / Release Shape			
Map	CC 122	Play Mode			
Map	CC 123	Osc 2 FM Mode			

Here is the Remote Map for RPVerb

Scope //	Rob Papen Control Surface Item	com.robpapen.RPVerb Key Remotable Item	Scale	Mode
Map	CC 08	Dry / Wet		
Map	CC 14	Enabled		
Map	CC 15	Ensemble On/Off		
Map	CC 22	Ensemble Volume		
Map	CC 23	Ensemble Mode		
Map	CC 24	Distortion On/Off		
Map	CC 25	Distortion Amount		
Map	CC 26	Early Reflection On/Off		
Map	CC 27	Early Reflection Volume		
Map	CC 28	Early Reflection Length		
Map	CC 29	Early Reflection Damping		
Map	CC 30	Early Reflection Feedback		
Map	CC 31	Early Reflection Side Feed		
Map	CC 44	Early Reflection Cross Feed		
Map	CC 45	Early Reflection Mode		
Map	CC 46	Reverb On/Off		
Map	CC 47	Reverb Room Size		
Map	CC 48	Reverb Length		
Map	CC 49	Reverb Pre-Delay		
Map	CC 50	Reverb Disorder		
Map	CC 51	Reverb Damping		
Map	CC 52	Reverb Volume		
Map	CC 53	Reverb Pre-Delay Disorder		
Map	CC 54	Reverb Diffusion		
Map	CC 55	Reverb Lowpass Colour		
Map	CC 56	Reverb Highpass Colour		
Map	CC 57	Reverb Space Type		
Map	CC 58	Reverb Colour Type		
Map	CC 59	Late Reflection On/Off		
Map	CC 60	Late Reflection Volume		
Map	CC 61	Late Reflection Length		
Map	CC 62	Late Reflection Damping		
Map	CC 63	Late Reflection Mode		
Map	CC 70	Envelope On/Off		
Map	CC 71	Envelope Attack		
Map	CC 72	Envelope Hold		
Map	CC 73	Envelope Release		
Map	CC 74	Envelope Modulation Amount		
Map	CC 75	Envelope Stereo / Mono Input		
Map	CC 76	Envelope Latch On/Off		
Map	CC 77	Envelope Mode		
Map	CC 78	EQ On/Off		
Map	CC 79	EQ Low		
Map	CC 80	EQ Mid		
Map	CC 81	EQ High		
Map	CC 82	EQ Position		
Map	CC 83	Reverb Space Size		
Map	CC 84	Reset		

Here is the Remote Map for PunchBD-RE

Scope //	Rob Papen Control Surface Item	com.robpapen.PunchBDRE Key Remotable Item	Scale	Mode
Map	CC 07	Volume		
Map	CC 10	Velocity		
Map	CC 16	Pan		
Map	CC 17	Tracking Off / On		
Map	CC 18	Global Tuning		
Map	CC 19	Global Fine Tuning		
Map	CC 20	Pitch Bend Up		
Map	CC 21	Pitch Bend Down		
Map	CC 22	Model 1 Off / On		
Map	CC 23	Model 1 Volume		
Map	CC 24	Model 1 Osc Wave		
Map	CC 25	Model 1 Curve Mode		
Map	CC 26	Model 1 Frequency Start		

Map	CC 27	Model 1 Frequency End
Map	CC 28	Model 1 Frequency Decay
Map	CC 29	Model 1 Frequency Curve
Map	CC 30	Model 1 Amp Hold
Map	CC 34	Model 1 Amp Curve
Map	CC 35	Model 1 Amp Decay
Map	CC 36	Model 2 Off / On
Map	CC 37	Model 2 Volume
Map	CC 39	Model 2 Osc Wave
Map	CC 40	Model 2 Curve Mode
Map	CC 41	Model 2 Frequency Base
Map	CC 42	Model 2 Frequency Drop
Map	CC 43	Model 2 Frequency Decay
Map	CC 44	Model 2 Frequency Curve
Map	CC 45	Model 2 Punch Amount
Map	CC 46	Model 2 Punch Decay
Map	CC 47	Model 2 Punch Curve
Map	CC 48	Click Off / On
Map	CC 49	Click Volume
Map	CC 50	Click Colour
Map	CC 51	Click Frequency
Map	CC 52	Click Frequency Drop
Map	CC 53	Click Decay
Map	CC 54	Click Spread
Map	CC 55	Click Offset
Map	CC 56	Global Synth Attack
Map	CC 57	Sample Off / On
Map	CC 58	Sample Volume
Map	CC 59	Sample Semi Tuning
Map	CC 60	Sample Fine Tuning
Map	CC 61	Vel > Sample Pitch
Map	CC 62	Random > Sample Pitch
Map	CC 63	Sample Filter Frequency
Map	CC 65	Sample Filter Q
Map	CC 66	Sample Vel > Filter
Map	CC 67	Sample Filter LFO Sync
Map	CC 68	Sample Filter LFO Amount
Map	CC 69	Sample Filter LFO Speed in Hz
Map	CC 70	Sample Filter LFO Speed in QB
Map	CC 71	Sample Filter Envelope Amount
Map	CC 72	Sample Filter Envelope Attack
Map	CC 73	Sample Filter Envelope Hold
Map	CC 74	Sample Filter Envelope Decay
Map	CC 75	Sample Amp Envelope Attack
Map	CC 76	Sample Amp Envelope Hold
Map	CC 77	Sample Amp Envelope Decay
Map	CC 78	Sample Offset
Map	CC 79	Sample Retrig Num
Map	CC 80	Sample Retrig Time
Map	CC 81	Sample Reverse Off / On
Map	CC 82	Sample Stereo Start
Map	CC 83	Sample Stereo End
Map	CC 84	Sample Stereo Time
Map	CC 85	Free Envelope Attack
Map	CC 86	Free Envelope Hold
Map	CC 87	Free Envelope Decay
Map	CC 88	Free LFO Sync
Map	CC 89	Free LFO Speed in Hz
Map	CC 90	Free LFO Speed in QB
Map	CC 91	Free LFO Symmetry
Map	CC 92	Free LFO Humanization
Map	CC 93	Mod 1 Amount
Map	CC 94	Mod 2 Amount
Map	CC 95	Mod 3 Amount
Map	CC 102	Mod 4 Amount
Map	CC 103	Filter Off / On
Map	CC 104	Filter Frequency
Map	CC 105	Filter Q
Map	CC 106	Distort Off / On
Map	CC 107	Distort Amount 1
Map	CC 108	Distort Amount 2
Map	CC 109	Model 1 to Distort
Map	CC 110	Model 2 to Distort
Map	CC 111	Click to Distort
Map	CC 112	Sample to Distort

The .remotemap will also be updated when any other Rob Papen Rack Extensions become available.

If you don't like the idea of creating or modifying Remote Maps we recommend purchasing the Nektar Panorama Controller which fully supports Rob Papen Rack Extensions. Product information can be found here:

<http://www.nektartech.com/Panorama>

Manual Version 1.4

Manual and mapping by Richard Hider/TONAL AXiS
<http://tonalaxis.wordpress.com>